

凸轮轴位置传感器 Camshaft Position Sensor

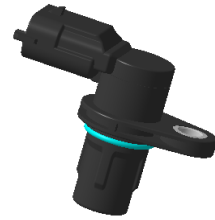
产品介绍 Product Description

该产品是基于霍尔原理而设计的，安装于发动机中通过采集位置信号，输入给ECU依次进行喷射控制、点火正时控制和爆震控制的凸轮轴位置传感器。

This product is designed based on Hall principle. It is a camshaft position sensor installed in the engine that collects position signals and inputs them to ECU for injection control, ignition timing control and knock control in turn.

产品特征及优势 Feature and benefits

- ◆ 工作温度范围广，为-40-150°C。
The working temperature range is - 40-150 °C.
- ◆ 密封、磁操作的非接触式传感，使用寿命长，可靠性高。
Hermetically sealed, magnetically operated non-contact sensing gives excellent life and reliability.
- ◆ 坚固的结构使该传感器非常适合恶劣环境。
Robust construction makes this sensor well suited to harsh environments.
- ◆ 高精度。
High Accuracy.



凸轮轴位置传感器
Camshaft Position Sensor

产品作用 Application

- ◆ 检测发动机气门的位置信号，输入给ECU识别气缸1的压缩上止点，依次进行喷射控制、点火正时控制和爆震控制。
Detect the position signal of the engine valve, input it to the ECU to identify the TDC of cylinder 1, and then conduct injection control, ignition timing control and knock control in turn.

操作 Operation

◆ 基本原理Basic principle:

向ECU输入发动机气门位置信号，提供点火控制的信号，收集凸轮轴的动角信号，从而确定点火时期和喷油时期。

Input the engine valve position signal to the ECU, provide the ignition control signal, and collect the dynamic angle signal of the camshaft to determine the ignition period and fuel injection period.

◆ 连接选项 Connection options:

根据客户选择定制连接系统。

Customized to customer choice of connection system.

◆ 包装选项 Packaging Options:

可提供定制包装以满足任何需要，请联系KESENS技术部了解详情。

Custom packaging can be provided to meet any need, please contact KESSENS Engineering for details.

凸轮轴位置传感器 Camshaft Position Sensor

技术参数 Functional Characteristics

参数 PARAMETER	最小值 MIN.	额定值 NOM.	最大值 MAX.	单位 UNITS	备注 COMMENT
工作温度 TEMPERATURE RANGE	-40		150	°C	
供电电压 SUPPLY VOLTAGE	4.75	5	5.25	V	
供电电流 SUPPLY CURRENT		5.5	7	mA	
低电平信号 LOW LEVEL SIGNAL	0		0.5	V	
高电平信号 HIGH LEVEL SIGNAL	4.75		5	V	
输出上升时间 OUTPUT RISE TIME			50	us	
输出下降时间 OUTPUT FALLING TIME			10	us	

可根据需要定制不同量程及电气和环境规范的产品，详情请联系KESENS研发部。

Products with different ranges and electrical and environmental specifications can be customized according to needs. Please contact KESENS design department for details.